

Free Project Sheet

Creative Canvas Projects

ANTIQUED CANVAS

Supplies:

- Two 8"x8" Visual Edge Canvases
- Ceramcoat Paint
Village Green
Dark Walnut
- Ceramcoat 2 Step Fine Crackle; Step 1 and 2
- Ceramcoat Satin Varnish
- Ceramcoat Glaze Base
- Wallies Wallpaper Cutouts: Blum Narcissus and Nose-gays
- Mod Podge
- Paint Brushes:
1" foam brush
Stiff bristle brush
Soft bristle brush
- Rusty Tin Photo Corners
- Tacky Glue

Instructions:

1. Basecoat canvases with Village Green, covering the front and edges.
2. Following the instructions *exactly* as they appear on the bottles, apply the 2 step crackle medium. Let dry for several hours.
3. Mix equal parts Dark Walnut with Glaze Base. Use the mixture to antique the canvas by brushing it on with a foam brush and wiping it off with a soft cloth. Allow to dry thoroughly, at least an hour.
4. Brush an even coat of Mod Podge decoupage glue to the back of the Wallies design. Place the Wallie on the center of the canvas, smoothing out any air bubbles. Use a damp cloth to gently wipe off any glue that oozes out from under the wallpaper cut out. Allow to dry thoroughly.
5. Apply Satin Varnish to the entire canvas. Allow to dry thoroughly.
6. Use tacky glue to attach the rusty photo corners to the corners of the canvas.

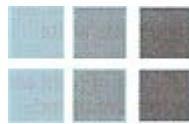
COLOR BLOCK CANVAS

Supplies:

- Visual Edge Canvas
- Ceramcoat Paint
- 2" Foam Brush

Instructions:

Color blocking works best if you choose at least three colors. The project pictured in our store uses two rows of three canvases. Each vertical row is painted a different shade of blue



You can increase the impact of your color palette by hanging more rows of canvases.



You can add a simple design element to your color blocked canvases with a chunky stamp or stencil.



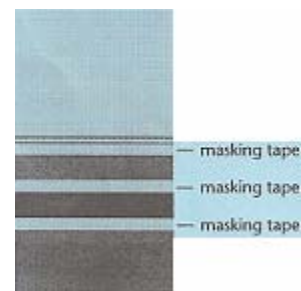
STRIPED CANVAS

Supplies:

- Two 12"x24" Visual Edge Canvases
- Ceramcoat Paint
Main Color
Secondary Color
2 Accent Colors
- Masking Tape
- Paint Brushes:
2" foam brush
#4 round brush

Instructions:

1. Basecoat canvases with your main color, covering the front and edges. Allow to dry completely, at least one hour.
2. Apply a strip of masking tape in the middle of the canvas. Drop down two inches and apply another strip of tape. Drop down another two inches and apply a third strip of tape.
3. Referring to the diagram, paint the first exposed strip of paint with the secondary color, as well as the bottom portion.
4. Paint the center strip with the accent color. Do the same for the second canvas, using the second accent color.
5. Use the #4 round brush to paint two lines just above the first strip of masking tape. Use a shaky hand to create wiggly lines.
6. Remove all tape before the paint dries completely



Craftwarehouse®
More than a craft store